

Mulburries



Kensington House, Corner Hall, Hemel Hempstead, HP3 9YT

£1,500 Per month 12th May 2026

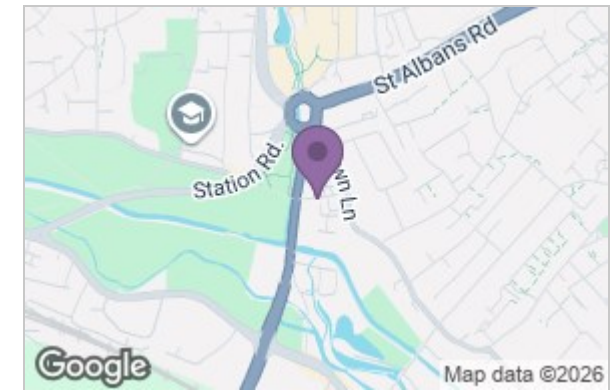


Kensington House, Corner Hall, Hemel Hempstead, HP3 9YT

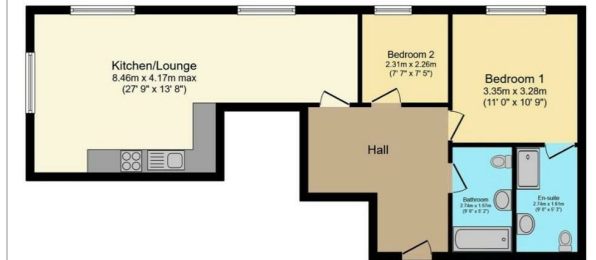
Mulburries LTD are delighted to offer this spacious two bedroom first floor apartment situated in this convenient location close to the town centre, local cafes and a host of eat in establishments. The property offers a spacious open plan modern Lounge/Kitchen area, master bedroom with en suite shower room, second bedroom / study, luxury bathroom and allocated parking. Being located on the first floor, the home is light and airy throughout and these highly sought after homes are often tenanted quickly. This property is available from the 30th April, so please call the offices now to discuss the property further.

- Fully furnished
- Two Bedrooms
- Available End Of April
- Allocated Parking
- En Suite Bathroom
- First Floor
- Close To Town Centre

Area Map



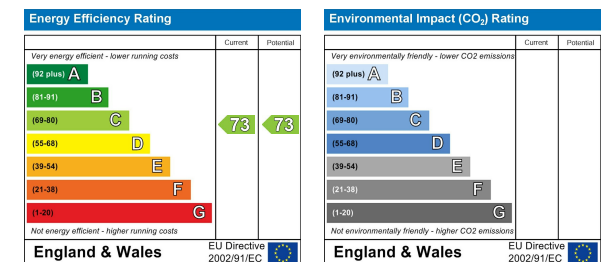
Floor Plan



Floor Plan
Floor area 66.0 sq.m. (711 sq.ft.) approx



Energy Efficiency Graph



These particulars, whilst believed to be accurate are set out as a general outline only for guidance and do not constitute any part of an offer or contract. Intending purchasers should not rely on them as statements of representation of fact, but must satisfy themselves by inspection or otherwise as to their accuracy. No person in this firm's employment has the authority to make or give any representation or warranty in respect of the property.